



# 2026 WHOLESALE CATALOGUE

New Zealand Made pasta, pesto and sauces for all catering needs.



## THERE IS NO COMPROMISE IN GOOD PASTA.

We have been making fresh pasta, sauces, lasagne and ready to eat meals using locally sourced ingredients for over 25 years. Crafted with care, providing consistent texture and flavours that are unforgettable.



# LASAGNE & PASTA MEALS

We are dedicated to filling our products with nutritious and delicious flavours that will keep your customers coming back for more!



Weight as Indicated | Frozen | 52 week shelf life  
Pre-cut and pre-scored options available



**Beef Lasagne**

**6 x 270g Pcs**  
33969

**3kg Tray**  
12520

**7kg Tray**  
95574




**Chicken & Basil Lasagne**

**2.6kg Tray**  
108960



**Roasted Vegetable Lasagne**


  
**6 x 270g Pcs**  
33968

**3kg Tray**  
12974

**7kg Tray**  
95576




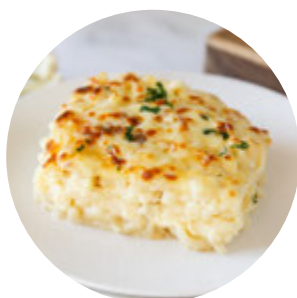
**Mushroom & Lentil Lasagne**

  
**6 x 270g Pcs**  
109332




**Macaroni Cheese**

  
**2.6kg Tray**  
100656



**Macaroni Cheese w/  
Cauliflower**

  
**2.6kg Tray**  
103717



**Penne Carbonara**

**2.6kg Tray**  
113994

For more information, or samples, call us on 03 343 4107 or contact your local sales representative.

# FRESH RIBBON CUT PASTA

Made with a carefully selected blend of flours and free range eggs. Our ribbon cut pasta is used in quality restaurants around Aotearoa.



1kg | Chilled | 8 week shelf life



## Spaghetti

2mm Square Cut



100394



## Linguine

2mm Flat Cut



100392



## Fettucine

5mm Flat Cut



**Traditional**  
100389

**Tricolore**  
100390



## Tagliatelle

8mm Flat Cut



100393



## Pappardelle

20mm Flat Cut



40421



## Casarecce

Short Twisted



103087



## Teddy Bears

Teddy bear shape



TEDDY



## Lasagne Sheet

230mm x 265mm



100391

For more information, or samples, call us on 03 343 4107  
or contact your local sales representative.

# FILLED PASTA (FROZEN)

Our fillings are made with locally sourced fresh produce and wrapped in thin sheets of fresh pasta. The hand-cut style of our filled pasta makes for an authentic finish when plated.

1kg | Frozen | 52 week shelf life



**Ravioli**  
25mm x 25mm Square

**Pumpkin & Ricotta**  
10283



**Spinach & Ricotta**  
161470



**Tortellini**  
20mm Hats

**Chicken**  
65692

**Beef**  
66809

**Herb & 4 Cheese**  
148324



**Spinach & Ricotta**  
11653



**Pansotti**  
60mm Circle

**Mushroom, Walnut & Feta**  
34240



**Spinach & Ricotta**  
34239



**Mozzarella**  
114204



**Ravioloni**  
50mm x 50mm Square

**Mushroom, Walnut & Feta**  
45956I



**Pumpkin & Ricotta**  
57650



**Gnocchi**  
30mm Dumplings

**Kumara & Horopito**  
68016



**Potato**  
14952



**Pumpkin**  
74575



For more information, or samples, call us on 03 343 4107 or contact your local sales representative.



# Taste AOTEAROA



Gourmet filled pasta featuring the native flavours of New Zealand.



Our delicious Pansotti featuring tender fresh pasta wrapped around beautiful soft and creamy fillings, will help you create dishes that bring the unique flavours of Aotearoa to your customers.

Crafted for chefs who take provenance seriously and want every dish to tell a story.

# PANSOTTI

60mm x 20g each parcel, 60% filling  
Recommended serve: 5 pieces per portion.

1kg | Frozen | 12 units per carton | 12 month shelf life |  
50 pieces per kg



## PANSOTTI LEMON & KAWAKAWA

New Zealand Cheeses combined with zesty lemon lift the earthy, peppery notes of kawakawa, a native leaf long honoured in rongoā Māori.

114202



## PANSOTTI FOREST MUSHROOM & HOROPITO

Earthy and complex. Umami-rich mushroom paired with horopito's peppery heat, a pairing to excite the palate.

114203



## PANSOTTI KUMARA & HOROPITO

The natural sweetness of roasted New Zealand kumara, meets the peppery heat of horopito. Bold, balanced, and unmistakably Aotearoa.

114201



## PANSOTTI MOZZARELLA

A rich and creamy blend of New Zealand cheeses featuring mozzarella, ricotta, aged cheddar and parmesan.

114204



\* rongoā: traditional Māori medicine

For samples or more information,  
please contact 03 343 4107 or  
[sales@pasta.co.nz](mailto:sales@pasta.co.nz)

# PESTO & HUMMUS

Our pesto and hummus range deliver fresh, bold flavours. Crafted from scratch, our Basil is homegrown in New Zealand.



850g | Chilled | 12 week shelf life



## Basil Pesto

Pouch with Twist Top

V GF

60781



## Plant-based Basil Pesto

Pouch with Twist Top

VE DF GF

70148



## Sundried Tomato Pesto

Pouch with Twist Top

V GF

60783



## Traditional Hummus

Pouch with Twist Top

VE DF GF

45742

For more information, or samples, call us on 03 343 4107 or contact your local sales representative.



Simply twist off and squeeze out!



# GLUTEN FREE & PLANT-BASED OPTIONS

At Pasta Vera we have seen a real rise over the years in the need for Gluten Free and Plant-based products that are quick and easy to serve.



Weight as Indicated | Store as Indicated | 52 week shelf life  
Pre-cut and pre-scored options available



## Gluten Free Beef Lasagne

GF

6 x 270g Pcs

46492

Frozen



## Gluten Free Roasted Vegetable Lasagne

V GF

6 x 270g Pcs

62244

Frozen



## Gluten Free Lasagne Sheet

230mm x 265mm

V DF GF

1kg

62245

Frozen



## Gluten Free Gnocchi

25mm Dumplings

V DF GF

1kg

33054

Frozen



## Gluten Free Tagliatelle

8mm Flat Cut

V DF GF

500g

86107

Frozen



## Plant-based Ravioli

25mm x 25mm Square

VE DF

Spinach & Ricotta 1kg

97083

Frozen



## Plant-based Basil Pesto

Pouch with Twist Top

VE DF GF

850g

70148

Chilled | 12 week shelf life

For more information, or samples, call us on 03 343 4107 or contact your local sales representative.

# CANNELLONI

Delicious fillings wrapped in fresh pasta sheets that are ready to be turned into your next menu highlight.



Weight as Indicated | Frozen | 52 week shelf life



## Cannelloni Spinach & Ricotta

Filled Fresh Pasta Tubes



20 x 80g pcs  
104354



## Cannelloni Pumpkin & Feta

Filled Fresh Pasta Tubes



20 x 80g pcs  
104407



## Cannelloni Chicken & Spinach

Filled Fresh Pasta Tubes

20 x 80g pcs  
CANCS80



## Cannelloni Spinach & Lentil

Filled Fresh Pasta Tubes



20 x 80g pcs  
104406

Perfect for quick service and you can create your own sauces!



No time to prep? Just heat and serve!

## Cannelloni Meal

Ready to bake tray

Cannelloni with house-made Napolitana sauce, topped with Bechamel and cheese. Ready to bake and serve.

## Spinach & Ricotta 2.1kg Tray

108962



## Chicken & Spinach 2.1kg Tray

108961

For more information, or samples, call us on 03 343 4107 or contact your local sales representative.



# AFFORDABLE CATERING OPTIONS



Perfect for all catering sizes, hospitals, aged care and schools. Our cater ready range deliver consistent, NZ-made quality products while helping you cut costs.

- NZ made with locally sourced beef, vegetables and cheese
- Frozen, portionable, and ready to bake/ heat
- Protein-rich, cost-effective, and made for food service demands

Weight as Indicated | Frozen | 52 week shelf life  
Pre-cut and pre-scored options available



HIGH IN PROTEIN  
26.0g  
PER SERVE

## NZ Premium Beef Lasagne

Suggested Serving Size - 260g

7kg Tray  
95574



HIGH IN PROTEIN  
19.0g  
PER SERVE

## Roasted Vegetable Lasagne

Suggested Serving Size - 260g

V  
7kg Tray  
95576



HIGH IN PROTEIN  
20.0g  
PER SERVE

## NZ Prime Beef Lasagne Catering

Suggested Serving Size - 260g

1.3kg Tray LASBT1.3 **NEW**

2.6kg Tray  
109163



HIGH IN PROTEIN  
21.1g  
PER SERVE

## Chicken & Vegetable Lasagne Catering

Suggested Serving Size - 260g

2.6kg Tray LASC SCHOOL



HIGH IN PROTEIN  
21.8g  
PER SERVE

## Premium Chilli Con Carne

Suggested Serving Size - 200g

GF  
2kg Pack  
16395



HIGH IN PROTEIN  
17.0g  
PER SERVE

## Chilli Con Carne Catering

Suggested Serving Size - 200g

GF  
2kg Pack  
CCC SCHOOL



## Vegetable Chilli

Suggested Serving Size - 200g

V GF  
2kg Pack  
34955



HIGH IN PROTEIN  
14.4g  
PER SERVE

## NZ Beef Bolognese Sauce

Suggested Serving Size - 200g

GF  
2kg Pack  
109378

For more information, or samples, call us on 03 343 4107 or contact your local sales representative.



## WE'D LOVE TO HEAR FROM YOU

 [sales@pasta.co.nz](mailto:sales@pasta.co.nz)

 03 343 4107

[www.pasta.co.nz](http://www.pasta.co.nz)